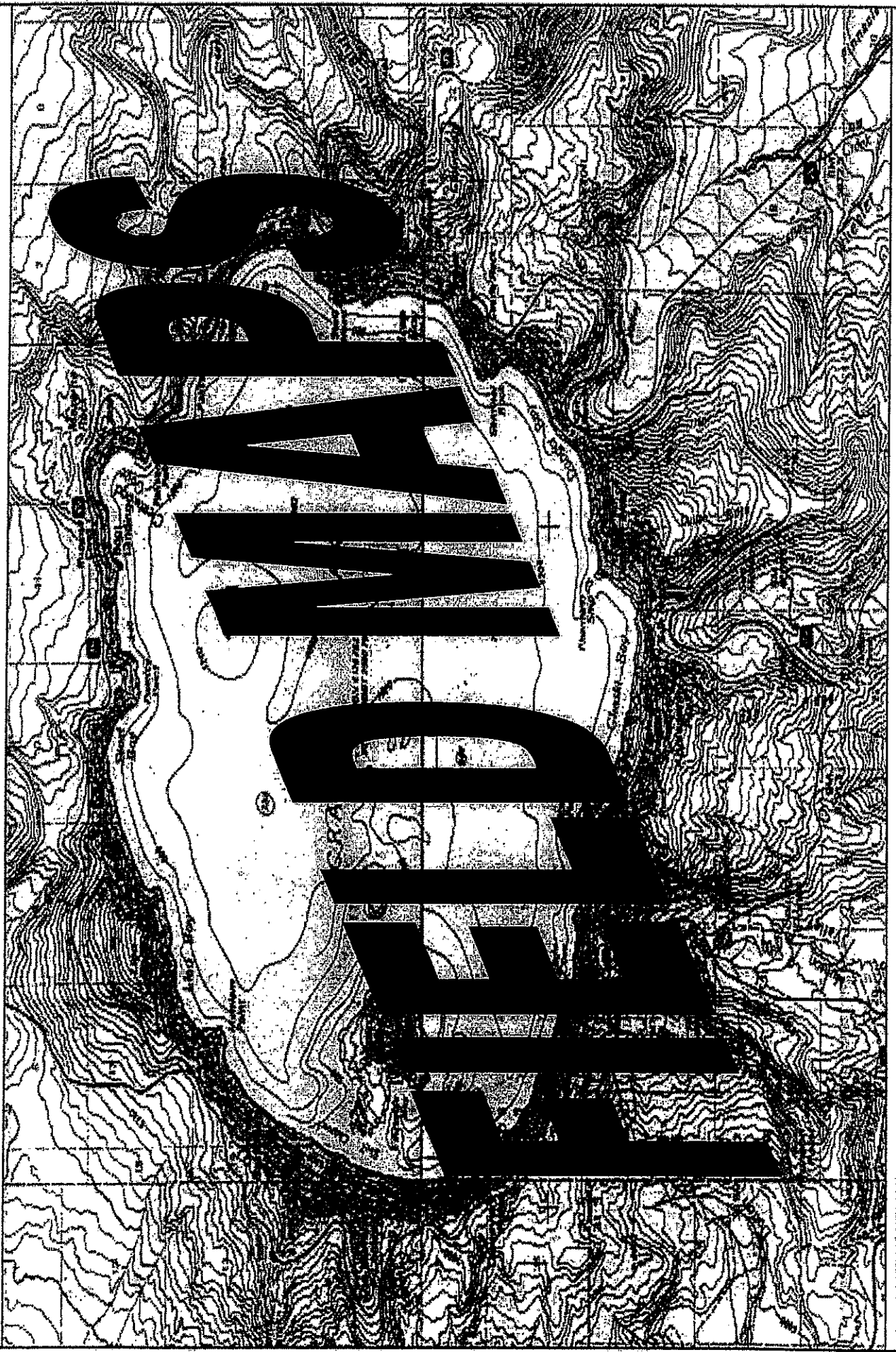


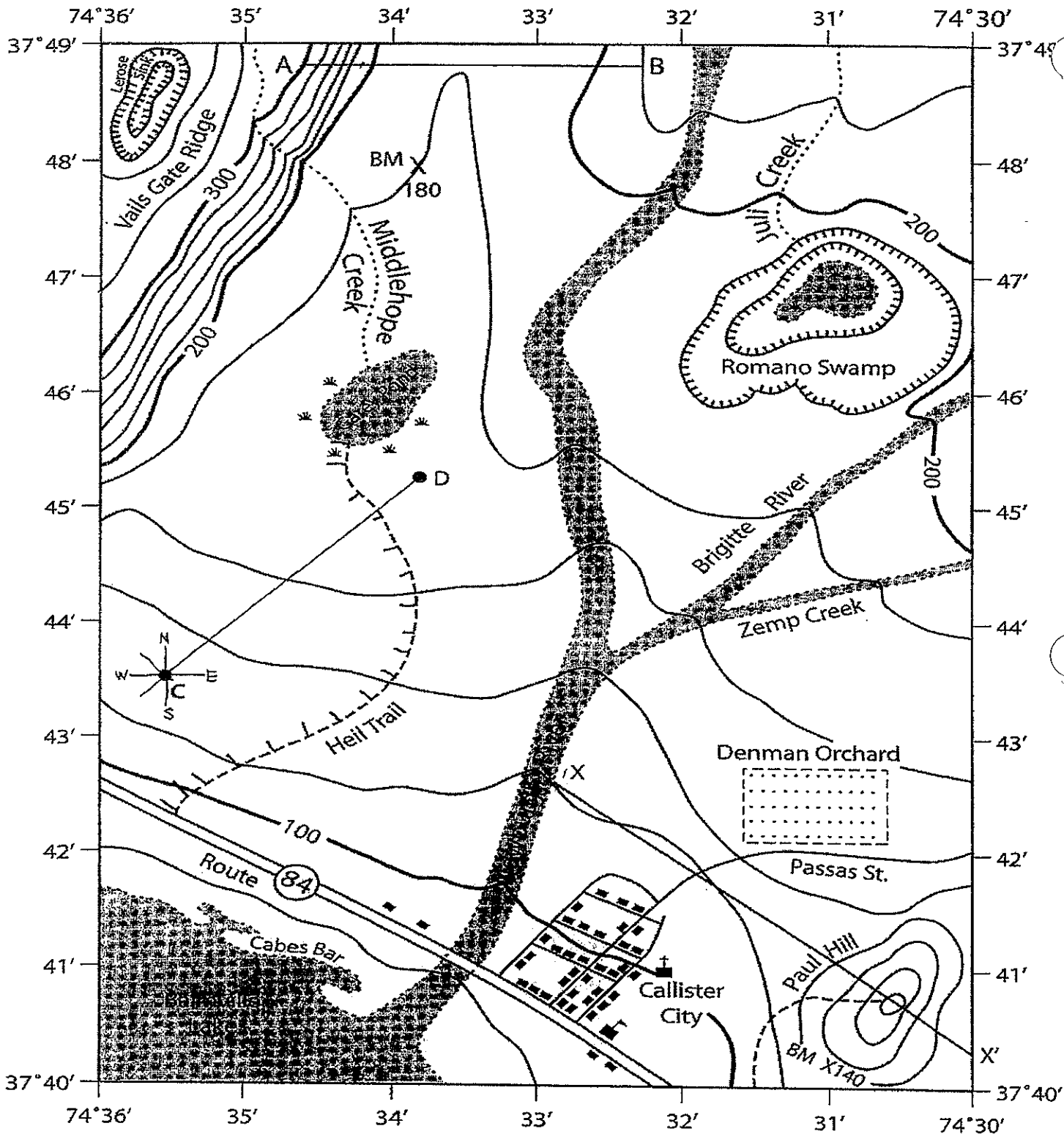
Crater Lake, Oregon, Topographic Map



Topinka, USGS/CVO, 1999; Map modified from: U. S. National Park Service Map



Callister Quadrangle



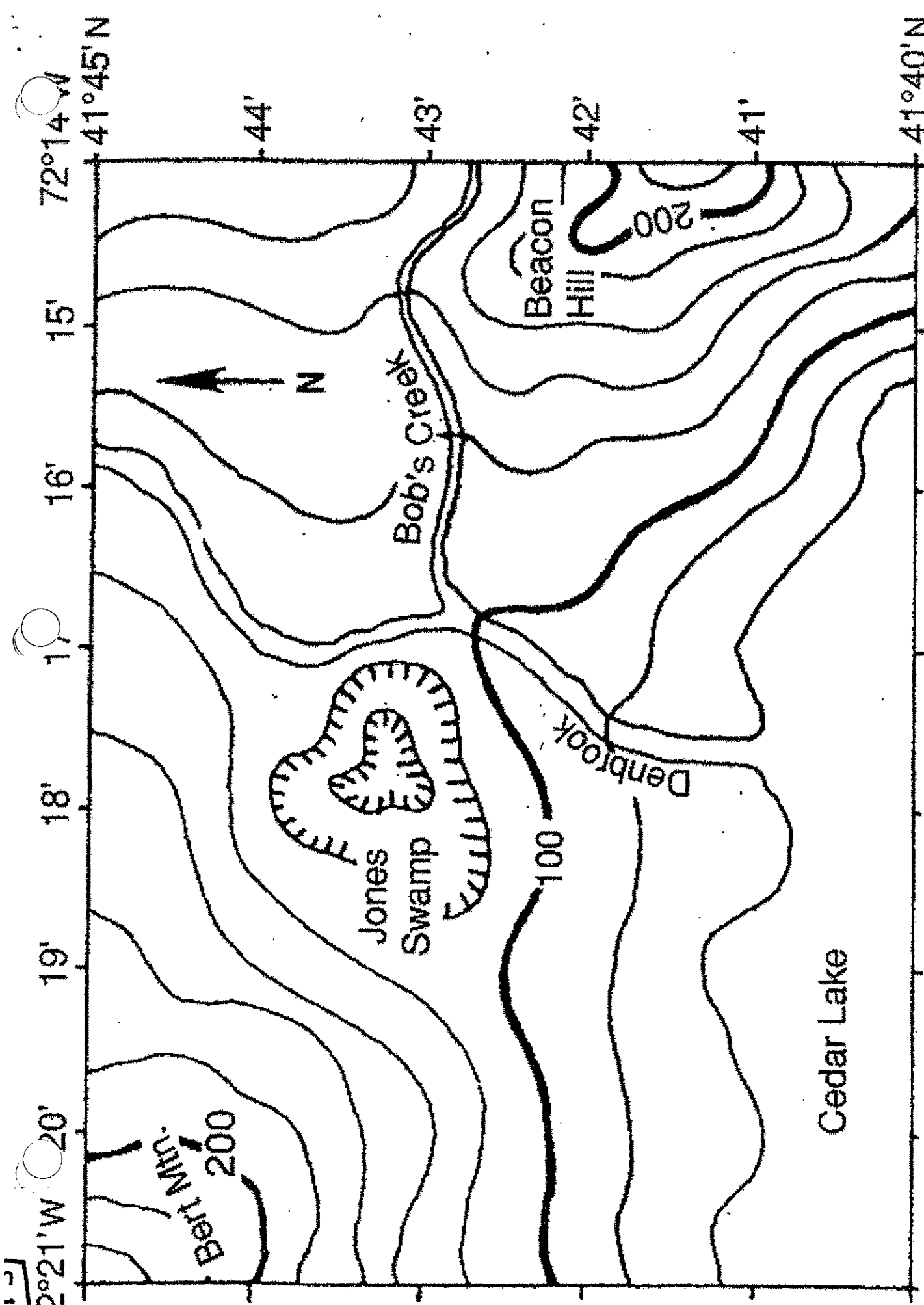
Map Scale 0 1 2 3 4 Miles

Symbols

..... Water body boundary	----- Trail	⚡ School	■ Building
Depression contours	* Swamp	⚡ Church	BM X Bench mark

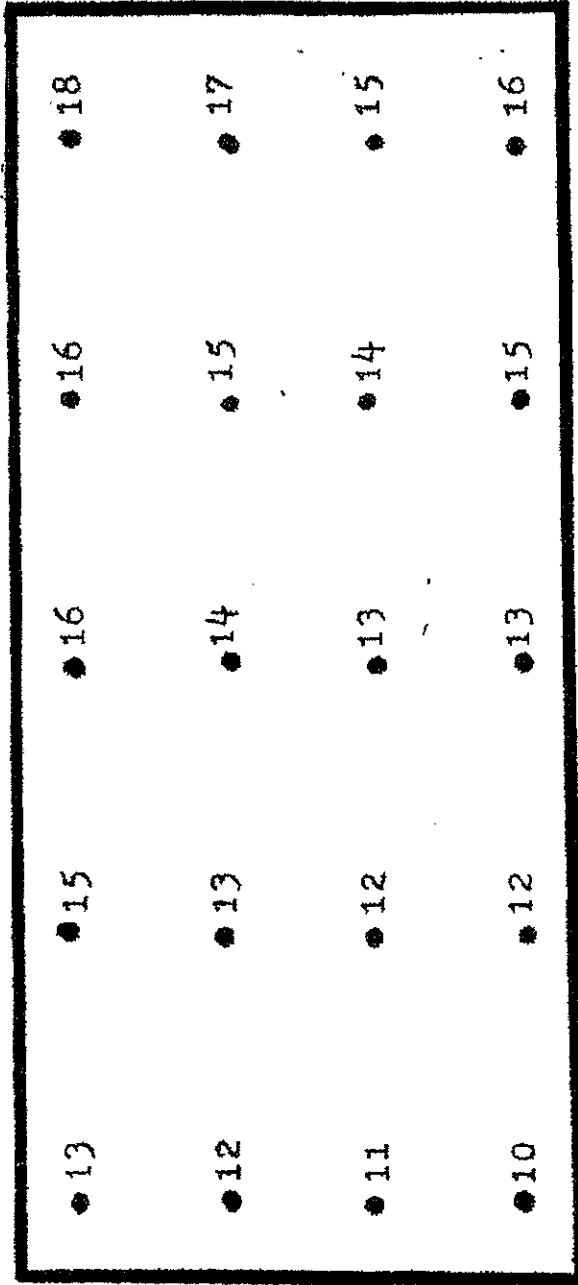
3/4 inch = 1 mile Contour interval = 20 feet

B

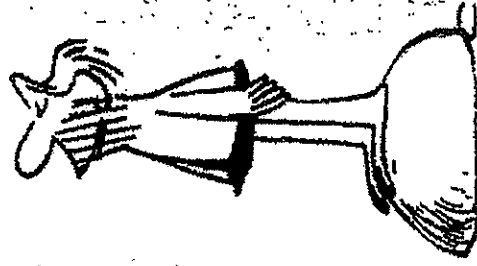




Use a contour interval of one.



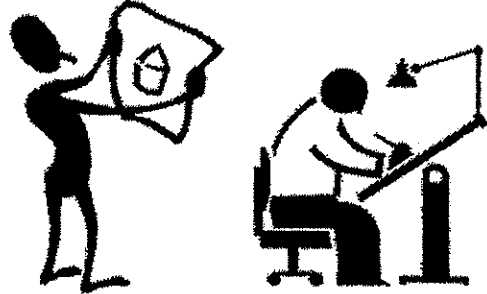
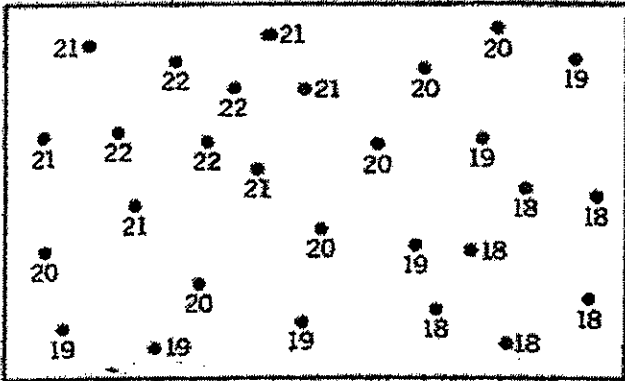
It's quite simple really!



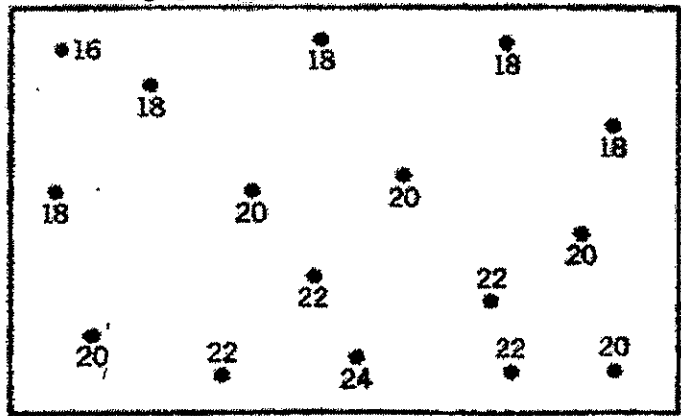
● 30	● 31	● 32	● 30	● 29
● 31	● 32	● 33	● 31	● 30
● 31	● 34	● 35	● 32	● 30
● 30	● 32	● 33	● 31	● 29
● 29	● 30	● 31	● 30	● 28

Temperature Isotherms

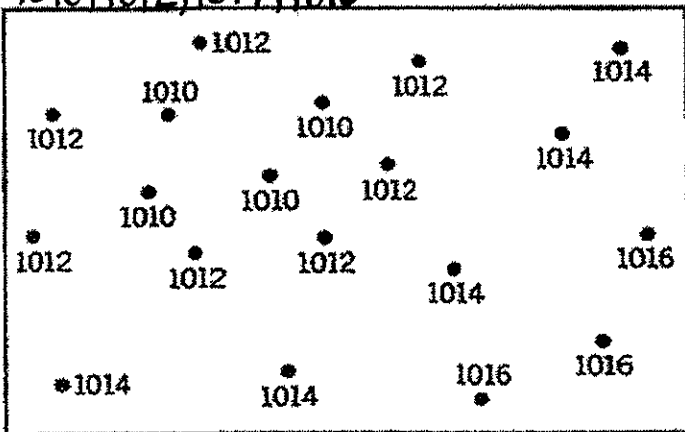
↓ 18, 20, 22



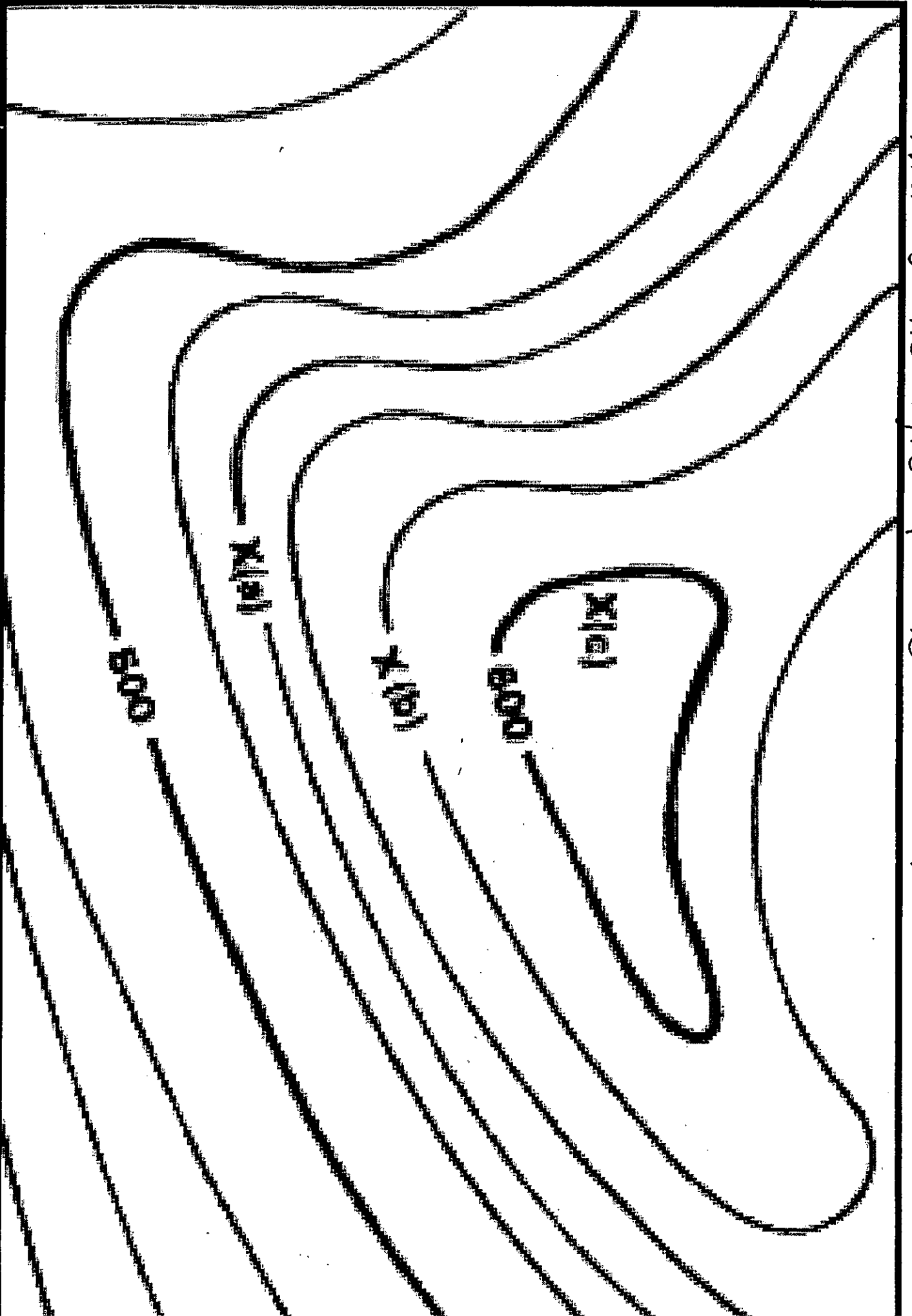
↓ 18, 20, 22 Isotherms



↓ 1010, 1012, 1014, 1016 Isobars

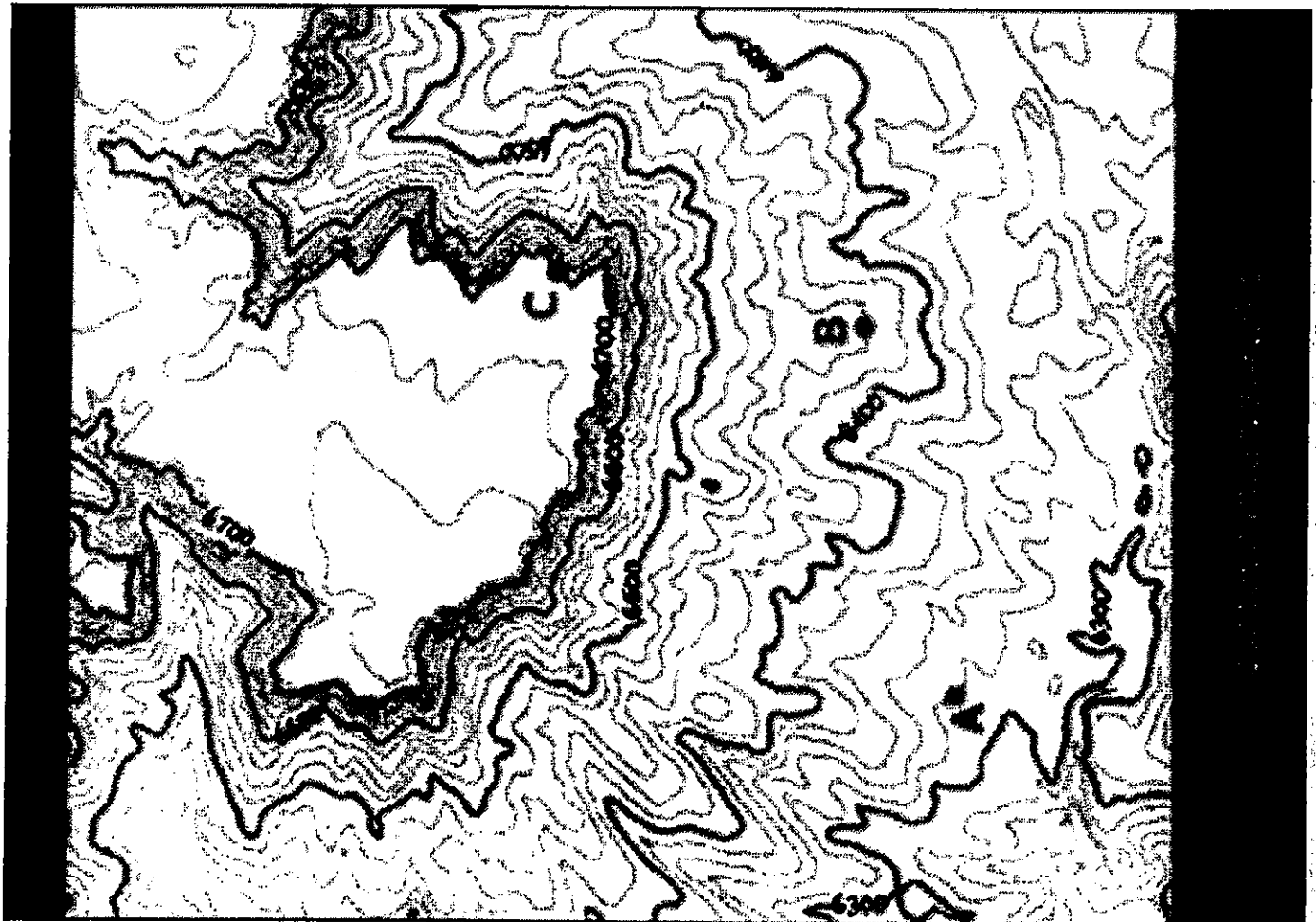


What is the highest possible elevation? _____



G

H

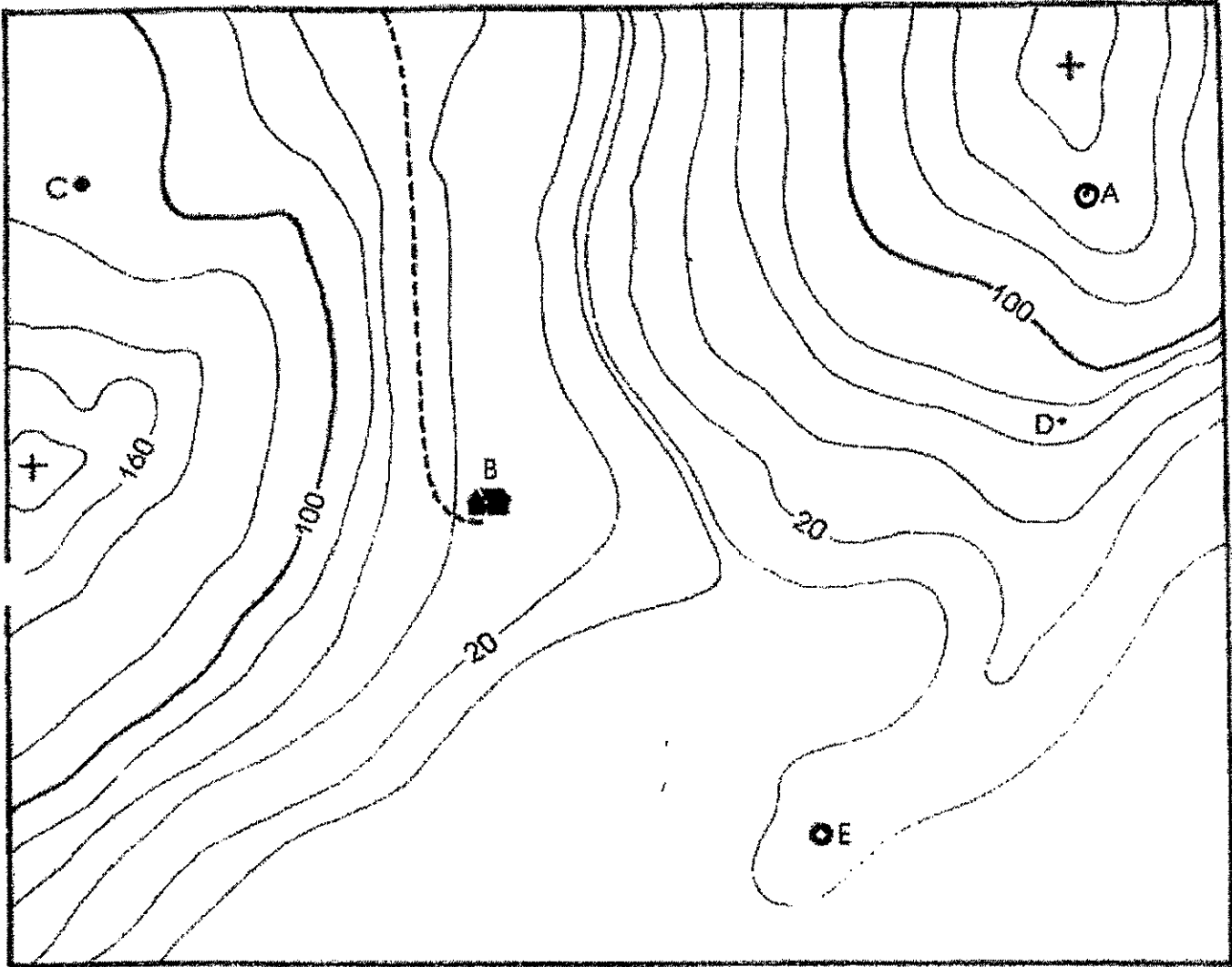


H

Topographical Maps

Name _____

Topographical maps give the geographical positions and elevations of both manmade and natural features. Using the contour lines and contour intervals, label the elevations of the features on this map.



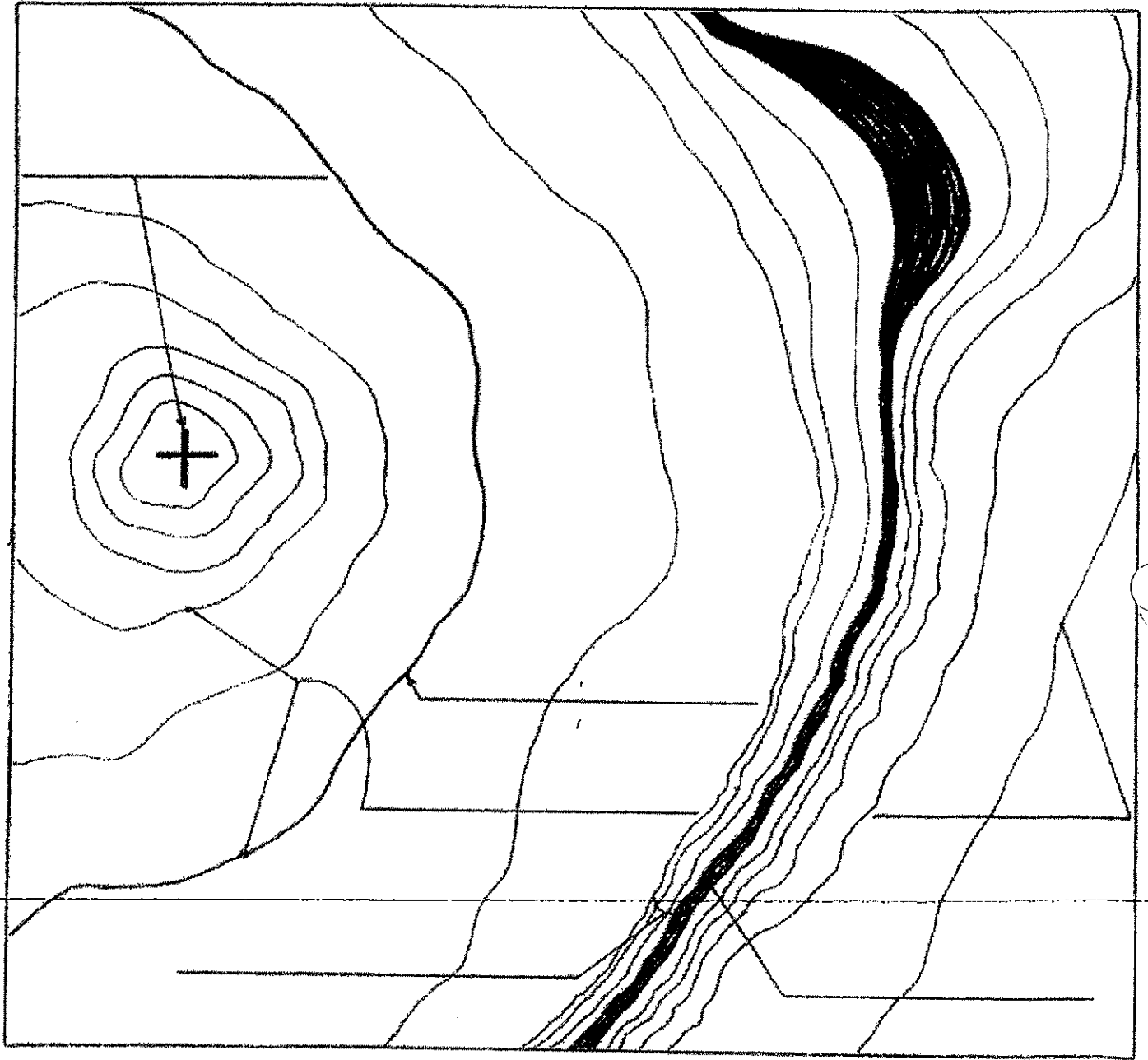
FEATURE	ELEVATION
A	between _____ and _____ feet
B	between _____ and _____ feet
C	between _____ and _____ feet
D	between _____ and _____ feet
E	between _____ and _____ feet



Topographic Maps

Name _____

A topographic map uses contour lines to show the elevation and slope of hills, valleys, and other natural features. Label the various land features and elements of the topographic map pictured below.



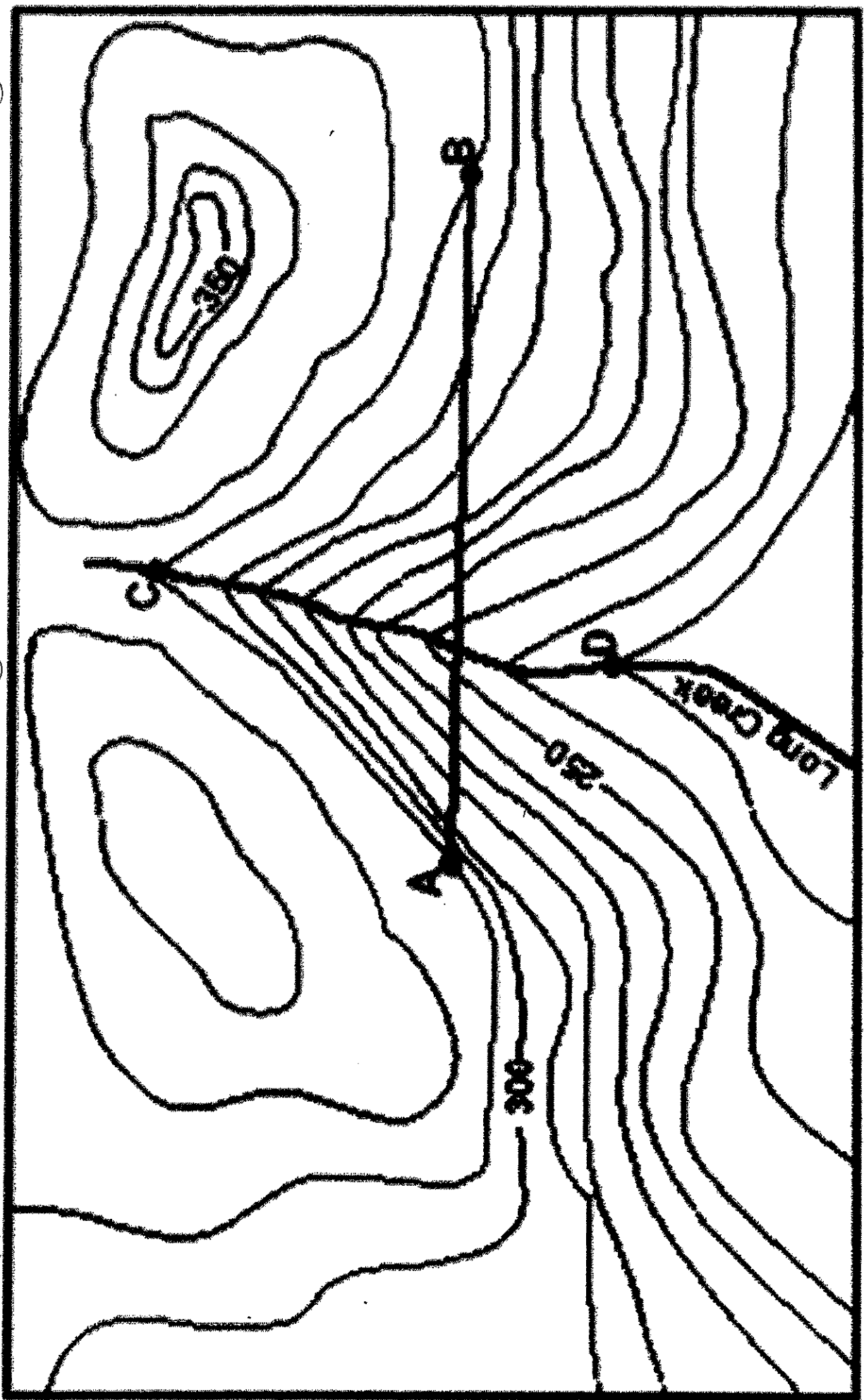
WORD BANK

contour line
steep slope

index contour line
gentle slope

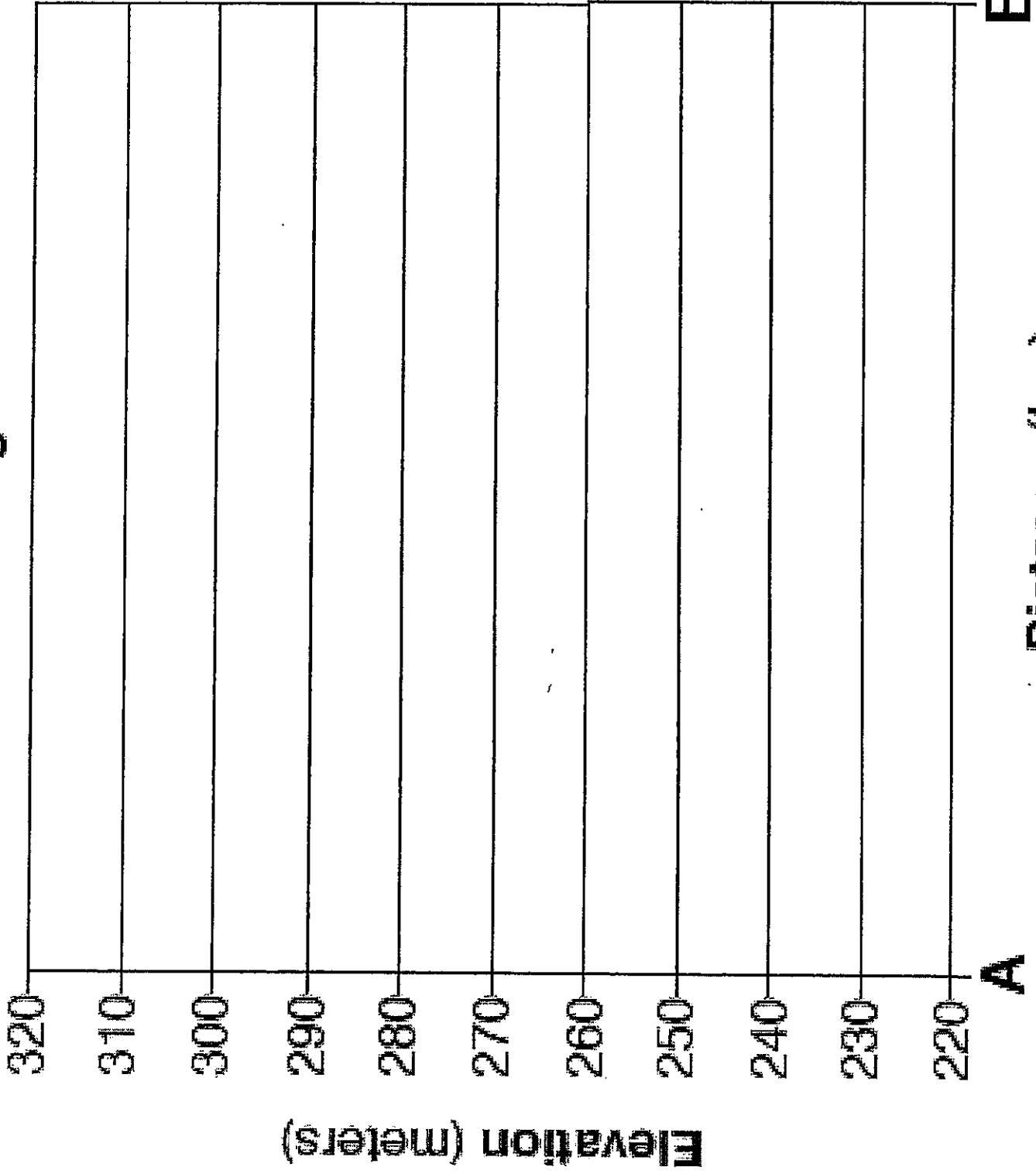
mountain top
river

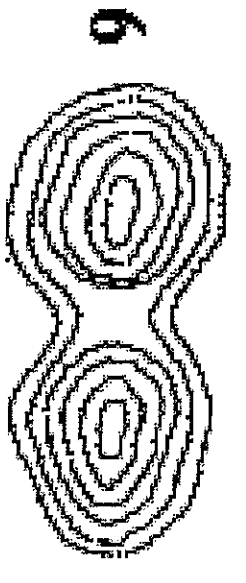
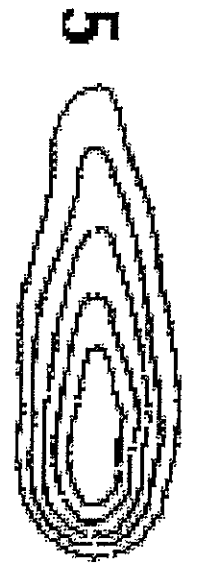
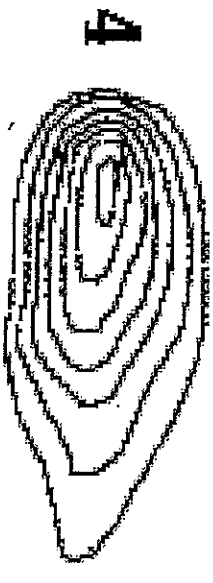
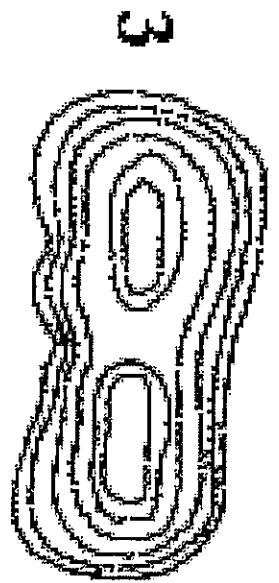
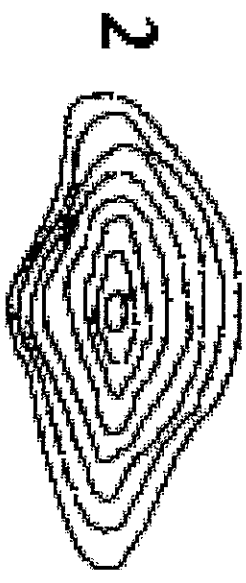
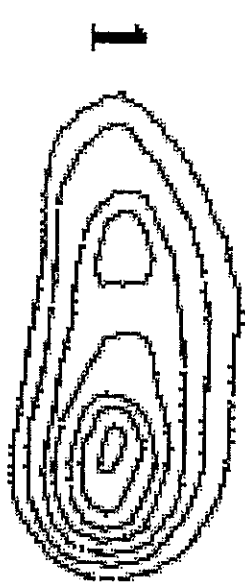




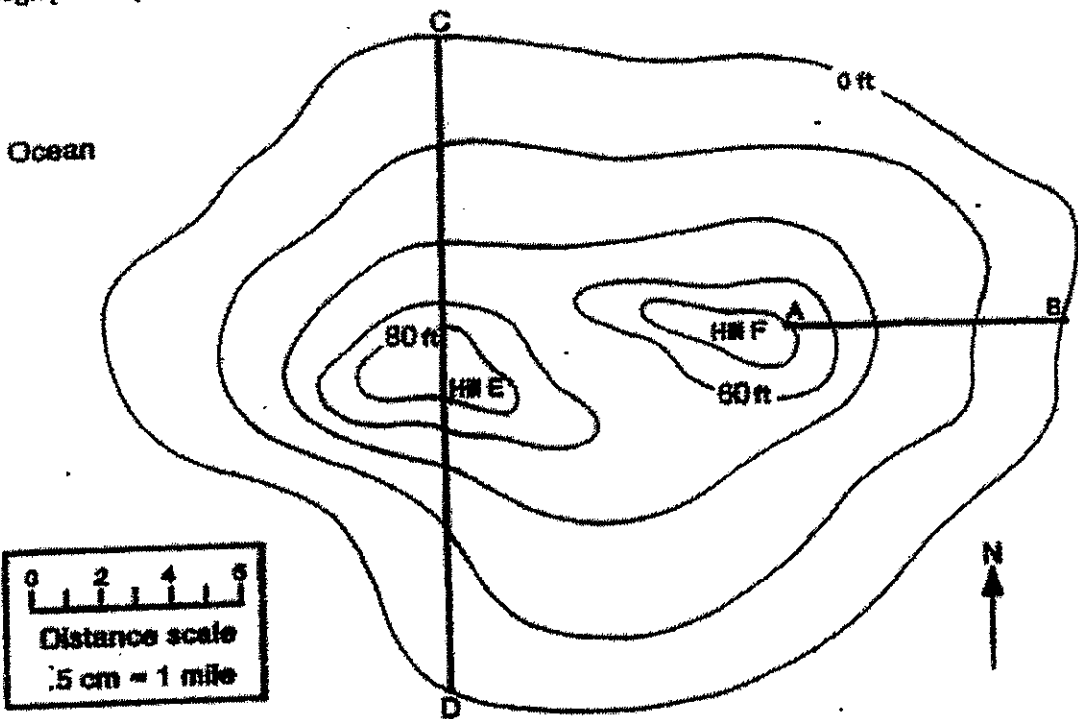
Contour interval = 10 meters

Profile Along Line AB





Base your answer to questions 104 through 106 on the topographic map of an island shown below. the Earth Science Reference Tables and your knowledge of earth science. The diagram shows a topographic map of an island. Points A, B, C and D are marked for reference.



43

104 In the space provided below, calculate the gradient of the slope between points A and B, using these directions:

- a. Write the equation for gradient. [1]
- b. Substitute data from the map into the equation. [1]
- c. Calculate the gradient. [1]
- d. Label your answer with the proper units. [1]